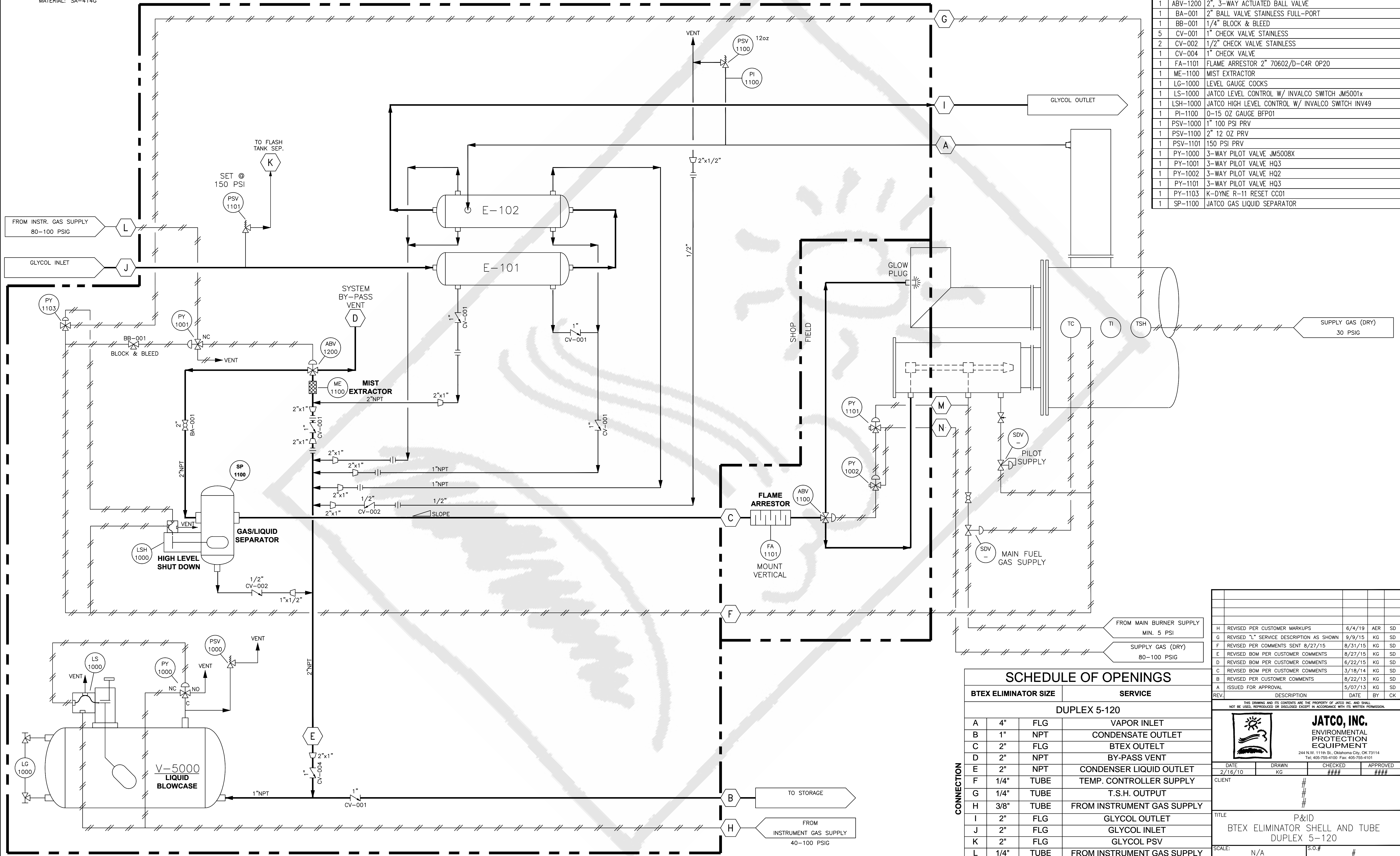


V-5000  
 SERVICE: LIQUID BLOWCASE  
 OD: 12" O.D.  
 LENGTH: 1'-0" 7/8" OAL  
 MATERIAL: SA-414G

E-101/E-102  
 JATCO BTEX ELIMINATOR SYSTEM  
 SHELL AND TUBE GLYCOL CONDENSER

P&ID BILL OF MATERIAL

QTY	TAG	DESCRIPTION
1	ABV-1100	3-WAY ACTUATED BALL VALVE
1	ABV-1200	2" 3-WAY ACTUATED BALL VALVE
1	BA-001	2" BALL VALVE STAINLESS FULL-PORT
1	BB-001	1/4" BLOCK & BLEED
5	CV-001	1" CHECK VALVE STAINLESS
2	CV-002	1/2" CHECK VALVE STAINLESS
1	CV-004	1" CHECK VALVE
1	FA-1101	FLAME ARRESTOR 2" 70602/D-C4R OP20
1	ME-1100	MIST EXTRACTOR
1	LG-1000	LEVEL GAUGE COCKS
1	LS-1000	JATCO LEVEL CONTROL W/ INVALCO SWITCH JM5001x
1	LSH-1000	JATCO HIGH LEVEL CONTROL W/ INVALCO SWITCH INV49
1	PI-1100	0-15 OZ GAUGE BFP01
1	PSV-1000	1" 100 PSI PRV
1	PSV-1100	2" 12 OZ PRV
1	PSV-1101	150 PSI PRV
1	PY-1000	3-WAY PILOT VALVE JM5008X
1	PY-1001	3-WAY PILOT VALVE HQ3
1	PY-1002	3-WAY PILOT VALVE HQ2
1	PY-1101	3-WAY PILOT VALVE HQ3
1	PY-1103	K-DYNE R-11 RESET CCO1
1	SP-1100	JATCO GAS LIQUID SEPARATOR



REV.	DESCRIPTION	DATE	BY	CHK
H	REVISED PER CUSTOMER MARKUPS	6/4/19	AER	SD
G	REVISED "L" SERVICE DESCRIPTION AS SHOWN	9/9/15	KG	SD
F	REVISED PER COMMENTS SENT 8/27/15	8/31/15	KG	SD
E	REVISED BOM PER CUSTOMER COMMENTS	8/27/15	KG	SD
D	REVISED BOM PER CUSTOMER COMMENTS	6/22/15	KG	SD
C	REVISED BOM PER CUSTOMER COMMENTS	3/18/14	KG	SD
B	REVISED PER CUSTOMER COMMENTS	8/22/13	KG	SD
A	ISSUED FOR APPROVAL	5/07/13	KG	SD

BTEX ELIMINATOR SIZE		SERVICE	
DUPLIX 5-120			
A	4"	FLG	VAPOR INLET
B	1"	NPT	CONDENSATE OUTLET
C	2"	FLG	BTEX OUTLET
D	2"	NPT	BY-PASS VENT
E	2"	NPT	CONDENSER LIQUID OUTLET
F	1/4"	TUBE	TEMP. CONTROLLER SUPPLY
G	1/4"	TUBE	T.S.H. OUTPUT
H	3/8"	TUBE	FROM INSTRUMENT GAS SUPPLY
I	2"	FLG	GLYCOL OUTLET
J	2"	FLG	GLYCOL INLET
K	2"	FLG	GLYCOL PSV
L	1/4"	TUBE	FROM INSTRUMENT GAS SUPPLY
M	1/4"	TUBE	FROM MAIN BURNER FG SUPPLY
N	1/4"	TUBE	FROM INSTRUMENT GAS SUPPLY

THIS DRAWING AND ITS CONTENTS ARE THE PROPERTY OF JATCO INC. AND SHALL NOT BE USED, REPRODUCED OR DISCLOSED EXCEPT IN ACCORDANCE WITH ITS WRITTEN PERMISSION.

**JATCO, INC.**  
 ENVIRONMENTAL PROTECTION EQUIPMENT  
 244 N.W. 11th St., Oklahoma City, OK 73114  
 Tel: 405-755-4100 Fax: 405-755-4101

DATE	DRAWN	CHECKED	APPROVED
2/16/10	KG	###	###

CLIENT: #

TITLE: P&ID BTEX ELIMINATOR SHELL AND TUBE DUPLIX 5-120

SCALE:	N/A	S.O.#	#
DRAWING NUMBER	10025	SHEETS	1 OF 1
		REV	H